

Workshop VII

CONSERVATION / DEMOLITION

PRAGUE, CZECH REPUBLIC, 25–28 September 2019

EAAE Thematic Network on Conservation
Faculty of Architecture CTU Prague



**European Association for
Architectural Education**
Association Européenne pour
l'Enseignement de l'Architecture



**FACULTY
OF ARCHITECTURE
CTU IN PRAGUE**

The workshop brings together a broad range of people, from art conservators to architects, engineers, and officials, to discuss the issues that have come to be of crucial importance in the management of European cultural heritage. Considering the roles that critical reflection and academic scholarship have played in developing conservation as a cultural practice, it will explore how the EAAE Conservation Network can enhance the contribution of these two basic pillars of architecture for the future of architectural heritage.

The workshop will take place in the heart of Europe: the City of Prague in the Czech Republic. It will comprise academic presentations on the issues identified below as topic areas, small, intensive group discussions, and study trips to selected sites.

TOPICS

1. Towards the contemporary hybrid city and cultural complexity

Do contemporary cities need a blended mix of history and modernity? How does gentrification impact public or private spaces, their diversity, and the intricate web of relations in the city?

2. The force of everyday life

How can we strengthen the sustainability of the cultural value, ecology, economy, and prolonged life cycle of the built environment through necessary, responsible maintenance? Can we control or manage amateur alterations (adaptations) driven by consumption and commercial forces?

3. Contemporary versus traditional technologies and approaches

Are traditional and modern technologies sufficiently accessible or culturally acceptable in a contemporary city? And what is the role of architects, conservators, municipalities, institutions, legislation, participation, and professional ethics?

4. The scale of new intervention versus memory

Is it possible to accept and make meaningful use of small-scale historic heritage in a contemporary city? Or to benefit contemporary lifestyles? Using current development approaches and building processes? Can demolition be accepted as a legitimate option or strategy? Can we accept demolition in the process of conservation? Or conservation and restitution after demolition?

THE SCIENTIFIC COMMITTEE

- Professor Loughlin Kealy (Emeritus Professor of Architecture, Co-coordinator of the EAAE Conservation Network, University College Dublin)
- Professor Stefano Francesco Musso (Co-coordinator of the EAAE Conservation Network, University of Genoa)
- Professor Rodica Crisan (Ion Mincu University, Bucharest)
- Professor Donatella Fiorani (University Sapienza, Rome)
- Professor Giovanna Franco (University of Genoa)
- Associate Professor Petr Vorlík (Czech Technical University in Prague)

THE ORGANISING COMMITTEE

Tomas Efler, Petr Vorlík and Magdalena Biedermannová, Klára Brůhová, Jana Bukačová, Martin Čtverák, Tereza Poláčková, Pavel Směták, Martin Stočes, Tomáš Tomsa, Helena Vaňková, Veronika Vicherková
Czech Technical University in Prague (Czech Republic)

demolition@fa.cvut.cz

Website: <https://www.facebook.com/conservation.demolition.prague.2019.eaae.workshop>

IMPORTANT DATES

Announcement and call for abstracts: 15 May 2019
Submission of abstracts and registration: **30 May 2019**
Acceptance of registration and abstracts: 15 June 2019
Contribution payment: **30 June 2019**
Final programme: 15 September 2019
Workshop: **25–28 September 2019**
Submission of papers: 15 January 2020
Publication: 2021

CALL FOR ABSTRACTS

Form – your name, title, institution, country, EAAE member/non member/phd student, text approx. 120 words, express your preference for accommodation and pre-exkursion – send to email demolition@fa.cvut.cz before **30 May 2019**.

WORKSHOP CONTRIBUTION

The contribution to take part in the workshop (covers refreshment during all sessions, rents for Wednesday and Thursday sessions, social dinner and copy of the book):

- EAAE members without accommodation – 340 EUR.
- Non EAAE members without accommodation – 370 EUR.
- Phd students without accommodation – 280 EUR.

The accommodation recommended by the organisers for 3 nights with breakfast; prices are for one person:

- Student dormitories on the campus of the Czech Technical University, 15 minutes to city centre by metro (www.masarykovakolej.cz/en/) – 85 EUR (single room, 11× available), 75 EUR (double bed, 5× available), 60 EUR (double bed with extra bed, 2× available).
- The hotel near the Prague Castle (www.hotelpyramida.cz) – approx. 160 EUR (double bed), approx. 290 EUR (single room).
- The hotel in the very centre of the Old Town (www.hoteljosef.com) – approx. 330 EUR (double bed), approx. 660 EUR (single person in doublebed).

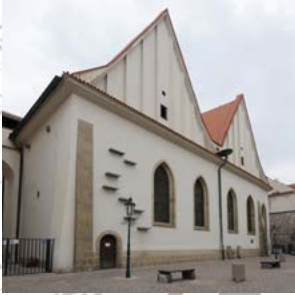
THE HOSTING INSTITUTION

The Faculty of Architecture, Czech Technical University in Prague (www.fa.cvut.cz; vcpd.cvut.cz; industrialnitopografie.cz). The Czech Technical University (CTU) in Prague is located in the centre of the capital city. The Faculty of Architecture of CTU is an EAAE member and offers 3 study programmes: Architecture and Urbanism, Landscape Architecture, and Design. It specialises in various fields of study and research in the areas of building design, urban planning, history, landscapes, and industrial design. The aim is to provide students with professional knowledge and skills that reflect contemporary concerns and issues relating to environmental and cultural responsibility. The main objective of the study programmes the Faculty of Architecture offers is to support a balance among the humanities, science, and the arts.

CO-ORGANISING INSTITUTIONS

The EAAE Thematic Network on Conservation, the European Association for Architectural Education (www.eaae.be), the University of Genoa (www.architettura.unige.it)

PRAGUE



1 PRAGUE OLD TOWN DISTRICT



2 DEJVICE DISTRICT



3 HOLEŠOVICE DISTRICT

2

3

1

WORKSHOP PROGRAMME

Wednesday, 25 September – Registration and Plenary Session – Bethlehem Chapel, Prague Old Town

Optional opening excursions: Villa Müller, Villa Rothmayer, Špork Palace, DRN, Na Slovanech Monastery, and other venues.

16:00 Arrival at CTU Prague; Registration of Participants

17:00 Official Welcome:

Stefano Musso (Coordinator of the EAAE network on conservation)

Loughlin's Kealy (Coordinator of the EAAE network on conservation)

17:30 Keynote Lectures

19:00 Coffee Break

19:30 Introduction and presentation of the workshop themes:

20:00 Closing of the Plenary Session

Free evening – Prague Centre

Thursday, 26 September – Study Trips – Prague Holešovice (Post-industrial) District

09:00 Meetup for coffee before the lectures and Study Trip 1

09:30 Opening Lectures:

11:00 Brunch

12:00 Study Trip 2

14:00 Coffee Break

14:00 Study Trip 3

16:30 Coffee Break and Discussion

Free evening

Friday, 27 September – Group Discussions – Faculty of Architecture

09:00 Division of participants into discussion groups

9:30 Group Discussions

11:00 Coffee Break

11:30 Group Discussions

13:00 Lunch

14:30 Group Discussions

16:00 Coffee Break

16:30 Group Discussions

20:30 Social dinner

Saturday, 28 September – Conclusion – Faculty of Architecture

09:00 Morning coffee meetup

09:30 Groups formulate and prepare their final statements

11:00 Brunch

11:45 Group presentations of statements

12:30 General conclusion and closing of the workshop

PRAGUE – DEJVICE / STŘEŠOVICE DISTRICT



1 Faculty of Architecture, CTU (Šrámková Architects, 2004–2010)



2 Faculty of Mechanical Engineering and Faculty of Electrical Engineering, CTU (F. Čermák, G. Paul, J. Liberský, V. Hladík, 1958–1969; restored)



3 Villa Müller (Adolf Loos, 1928–1930; V. Girsá, 1997–2000, restored)



4 Villa Rothmayer (O. Rothmayer, who collaborated with J. Plečnik, 1928–1929; restored)

8

1

7

2

5

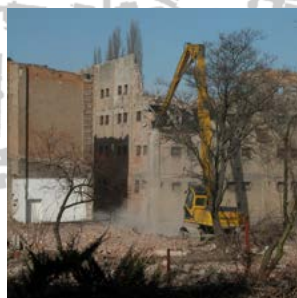
3

4

5 Telephone Exchange (J. Malátek, J. Eisenreich, V. Aulický, J. Eismannová, 1975–1982; demolished 2017)



6 Malt Plant of Marie Reiser and Sons in Prague (J. V. Novák, B. Bauer, H. Kraus, A. Pěkný, M. Spielmann, 1873, 1914; demolished 2007)



7 Bus Garage (A. Janda, J. Žák, 1931–1932; partly demolished, partly re-used)



8 Hotel Prague (J. Paroubek, A. Navrátil, R. Černý, J. Sedláček, 1971–1981, demolished 2014)



PRAGUE – HOLEŠOVICE DISTRICT



9 Vnitrobloc Multifunctional Space / Bendelmayer and Červenka Foundry (1885, 1895; L. Žďárský, J. Zajíc, 2016, DIY low-cost factory conversion)



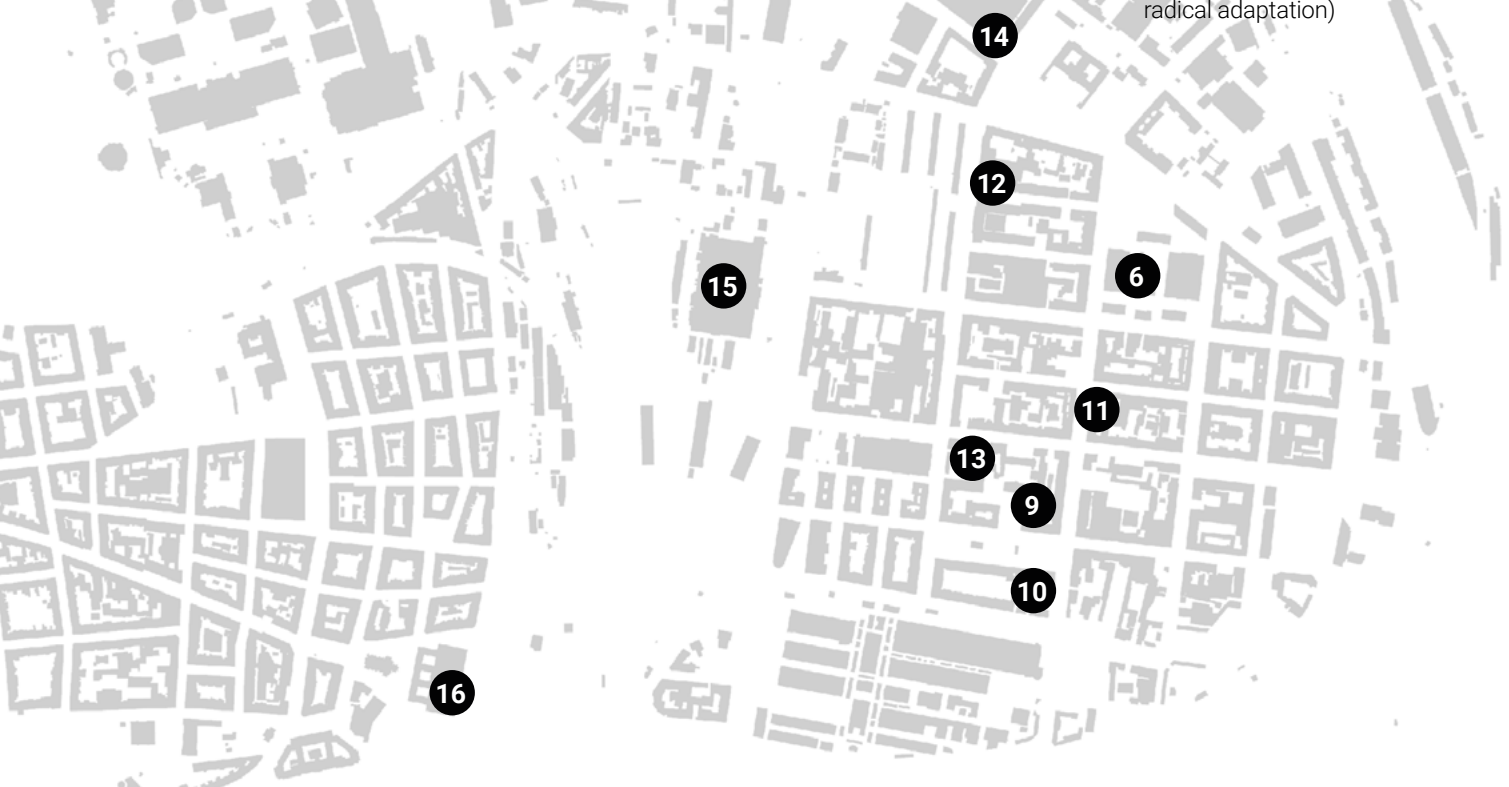
10 Architecture AP Atelier and Gallery / Factory for Water Metres (J. Vaňha, J. Vajhajstl, A. Řehák, F. Cholemský, 1926–1932; J. Plesköt, 1999, sensitive responsible conversion)



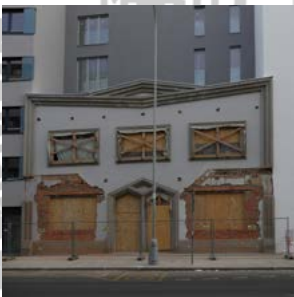
11 La Fabrika / Richter Machine Works and Foundry (A. Zázvorka, 1908; T. Novotný, T. Zmek, L. Ježek, 2004–2012, sensitive responsible conversion)



12 DOX – Centre of Contemporary Art / Rossemann & Kühnemann Mechanical Engineering Factory (A. Žižka, F. Troniček, 1901, 1928–1930; I. Kroupa architekti, 2007–2011, radical adaptation)



13 Materna Paint Factory (R. Stockar, 1911; just façade was left)



14 Ferra Iron Storehouse (J. Kříž, 1928–1929; demolished 2018)



15 Bubny Railway Station Grounds (K. von Ruppert, W. Flattich, K. Shumann, 1871–1873; demolished 2015)



16 Prague Electric Company Building (A. Benš, J. Kříž, 1927 - 1935; in danger 2019)

